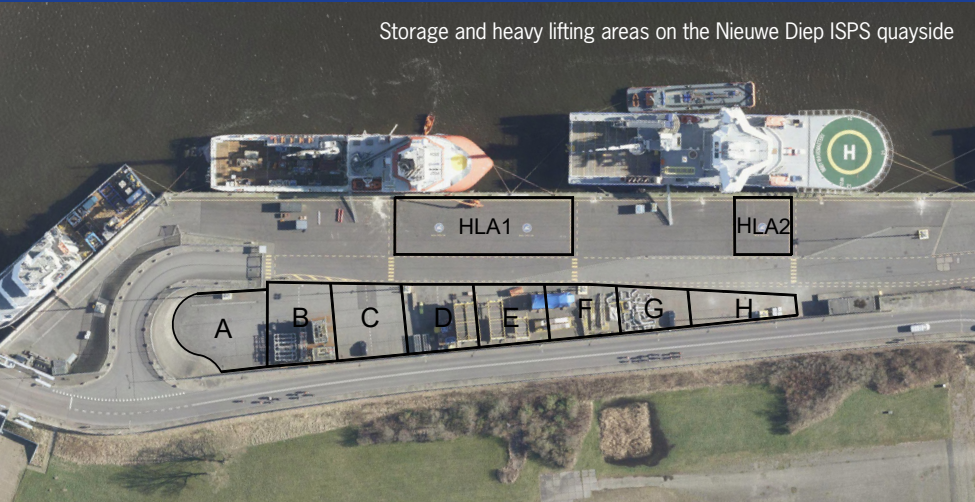




STORAGE AREA

Port of Den Helder offers their clients to use the temporary storage areas at the Nieuwe Diep quayside. The storage area is part of our ISPS zone and is divided in sections varying from 100 m² up to 400 m².



SEAPORT FACTS & FIGURES

Nieuwe Diep quayside length (direct sea access), fully ISPS	495 m
Multi purpose quayside length	200 m
ISPS-certified quayside length (direct sea access)	695 m
Nieuwe Diep quayside length (beyond the Moorman bridge), of which total ISPS length	970 m 150 m
Moorman bridge opening width	18 m
Dockside space Nieuwe Diep (direct sea access)	up to 11.500 m²
Dockside space multipurpose	up to 2.300 m²
Dockside space Nieuwe Diep (beyond the Moorman bridge)	up to 1.800 m²
Water depth runoff	10 m in relation to NAP
Water depth (seawards of the Moorman bridge)	9 m in relation to NAP
Water depth (beyond the Moorman bridge)	7 m in relation to NAP
Axle load	up to traffic class 90
Dockside load	up to 4 t/m²
Heavy lift areas	300 t
Drinking water	up to 225 m³ per hour
Electricity Nieuwe Diep quayside	up to 125 A 230-400 V
Security	ISPS-certified 24/7/365

Photography by flying focus

CONTACT INFORMATION

Office address

NV Port of Den Helder
Het Nieuwe Diep 33 | 1781 AD Den Helder | www.podh.eu

General offices

+31 (0)223 618 481
info@podh.eu

Port Authority

+31 (0)223 613 955
havenmeester@podh.eu

ISPS Port Security

+31 (0)223 685 232
portsecurity@podh.eu



93290 / 1123



Port of Den Helder: the logistics hub for the offshore industry servicing the North Sea based energy sector.

The international seaport of Den Helder offers a wealth of space and opportunities for energy offshore-related businesses, including wind energy.

Thanks to our geographical location, maritime and nautical conditions, our port has successfully been the preferred location for the offshore operations and maintenance industry for over 40 years. The presence of the national naval base offers additional opportunities for the defence industry and (technical) service providers.

A dedicated airport and knowledge base in terms of research and training institutes completes the value proposition.

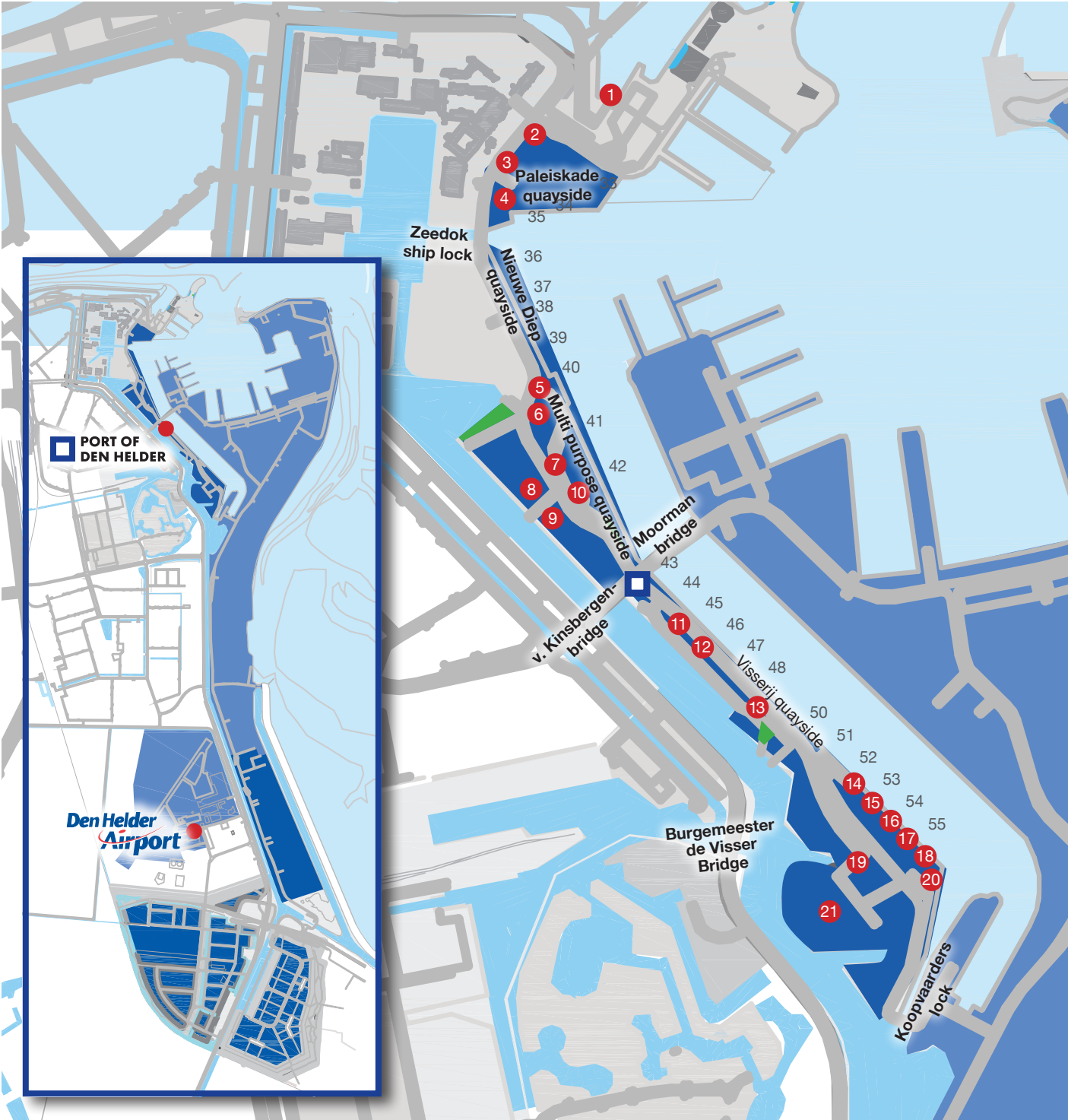


OFFSHORE: LOGISTICS AND TECHNOLOGY

For more than forty years Den Helder has been home to offshore operations & maintenance. With Den Helder Airport around the corner, the seaport is not only a strategic but also a logical and cost-effective choice. Breakneck developments in the field of technology and research have led to rapid growth in demands from the market, which to this date have always been successfully met by the seaport. This unique combination means that the seaport of Den Helder is an ideal location for supply delivery, crew changes, and rapid bunkering and has become the southern North Sea's largest offshore logistic hub.

UNIQUE CHARACTERISTICS

- LOGISTIC CENTRALISATION
- ISPS-CERTIFIED QUAYSIDE
- RAPID HANDLING
- DIRECT OPEN CONNECTION TO THE SEA
- DEEP WATER HARBOUR
- SHORT SAILING TIMES TO THE CONTINENTAL SHELF
- PUBLIC QUAYSIDE
- NEAR DEN HELDER AIRPORT
- ONE HOUR DRIVE FROM AMSTERDAM SCHIPHOL AIRPORT



Draft Port of Den Helder at water level NAP

Port entrance till quay 42: 9 m
Quay 43 till quay 55: 7 m

Communications

VHF channel	Call sign	Compulsory listening
62	Vessel trafic control centre	Yes
16	Coastguard Centre	No
14	NV Port of Den Helder	Yes
14	Zeedok ship lock	No
14	van Kinsbergen bridge	No
18	Moorman bridge	No
22	Burgemeester Visser bridge	No
22	Koopvaarders lock	No

Companies based in Port of Den Helder

- 1 Endures
- 2 MI-Swaco
- 3 DHTC
- 4 Peterson
- 5 DHSS / Clarksons
- 6 WUR (Wageningen University Research)
- 7 Blue Port Centre
- 8 Damen Shipyards
- 9 Reym
- 10 Vonk Maritime Education
- 11 Glomar
- 12 Intramar
- 13 Acta Marine
- 14 Bartel Kraak
- 15 ASW
- 16 Complete Store van Dijk
- 17 Vroon Offshore Services
- 18 Viking
- 19 SeaMar
- 20 ISD Nature Group
- 21 Teerenstra

Legend

- Parking
- Office NV Port of Den Helder
- Companies based in Port of Den Helder